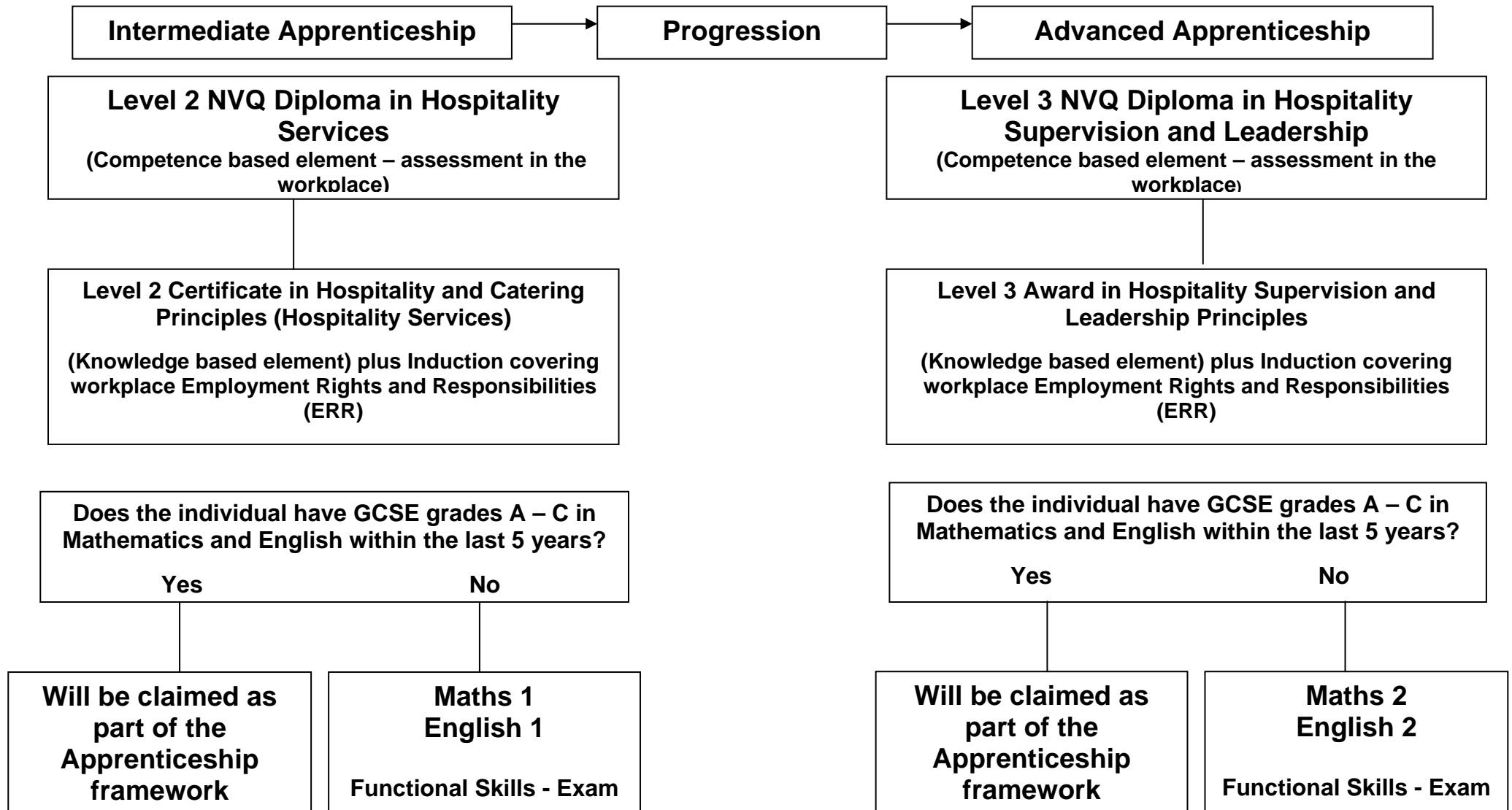


Hospitality and Catering Apprenticeship Framework

(As guidance each framework can take up to 12 months to complete depending on experience and existing qualifications)



Additional Employer Requirements:

Additional elements can be added to the framework at the request of the employer, at additional cost. These should be sector specific and can be additional units or qualifications which the employer feels would offer enhancement and meet business needs

What is an Apprenticeship

An Apprenticeship is a mix of real work and learning. Apprentices earn a wage and get experience whilst working towards a number of qualifications. An Intermediate Apprenticeship follows a Level 2 programme and can lead onto an Advanced Apprenticeship which is a Level 3 programme.

There are a number of elements to each Apprenticeship and this is called the framework. Each Apprenticeship framework has three main strands:

- competence based element
- technical element
- skills element

The three strands are sometimes accompanied by additional qualifications to give the most relevant skills and knowledge required for the job.

Overview

Apprentices will have the choice of career paths within this industry. If you are interested in service, you could train as waiting staff and learn how to serve customers, or train in drinks service; alternatively you may be interested in food preparation and would like to train as a chef. There are now over two million people working in the Hospitality and Catering Sector. The sector covers 14 industries from hotels and restaurants through to events, and travel services. There are approximately 142,000 individual hospitality, leisure, travel and tourism establishments in Great Britain. .

Delivery

Practical elements are delivered and assessed in the workplace with an option of part-time attendance at College to receive training in knowledge elements and functional skills. However, Milton Keynes College can be flexible and we may be able to work with organisations to enable any required training to be delivered on their premises.

Entry Requirements

To take part in this programme the learner will need enthusiasm for the subject, good communication skills, the ability to develop team work skills, a positive attitude and personality and a good school reference.

Example Job Roles as an Apprentice

Kitchen Assistants Waiting Staff Bar Staff Restaurant and Catering Managers Hotel and Accommodation Managers